

Practice Details



civil structural environmental
structural environmental civil
environmental civil structural

The Practice

TRP Consulting provides a full range of Civil, Structural and Environmental engineering consultancy services from offices in Manchester and Preston.

The Practice was established in 2000 and has demonstrated the ability to deliver high quality consultancy services on major projects.

The Directors draw on experience from a range of professional disciplines, providing a broad knowledge base and promoting a proactive approach to project delivery.

We recognise that the successful delivery of services is heavily dependent on the expertise, dedication and personal commitment of the staff involved.

The personal involvement of directors in project delivery is seen as a key part of our success. A significant part of our workload

derives from repeat business and recommendations of fellow professionals and clients.

The Practice actively supports staff in training and developing skills to allow them to realise their full potential and to maximise their contribution to the project team.

We believe that our ability to bring technical and commercial expertise, innovative thinking, and flexibility in approach offers significant benefits to our clients and allows services to be tailored to their individual needs.



Arsenal FC Training Facility
Reebok Stadium



civil structural environmental
structural environmental civil
environmental civil structural

Practice Objectives

The Directors are committed to providing high quality consultancy services, responding to new challenges or opportunities, and achieving sustained growth of the practice.

The key objectives are:

- Developing long term relationships with clients
- Establishing a clear framework for delivery of projects and services
- Monitoring performance of services and client satisfaction
- Managing change
- Using IT and new technologies to improve efficiency and project capabilities
- Providing a safe and pleasant working environment for staff
- Promoting staff development through provision of training and support.
- Managing invoicing, payments and cash flow.
- Promoting responsible use of resources, economic well-being and a sustainable future



Barton Grange Garden Centre and Marina
Oriel Drive Neighbourhood Health Centre



civil structural environmental
structural environmental civil
environmental civil structural

Services

TRP Consulting provides consultancy services to cover the following disciplines:

- Civil engineering
- Structural engineering
- Environmental engineering
- Geotechnical engineering
- Highways and infrastructure
- Water and public health engineering

Specialist services are regularly provided within these disciplines to include:

- Structural surveys and appraisals
- Pre-purchase and due diligence reports
- Site investigation
- Environmental desk studies
- Contaminated land investigation
- Remediation design and audits
- Landfill gas investigation and appraisal
- Historic buildings, appraisals
- Forensic engineering
- Expert witness
- Sports safety inspections
- Dynamic assessment of grandstands
- Crowd barrier risk assessment
- Value engineering
- Construction monitoring
- Flood modelling and risk assessment



Preston North End FC South and East Stands
Speke Neighbourhood Health Centre



civil structural environmental
structural environmental civil
environmental civil structural

Expertise

TRP Consulting operate extensively in the public and private sectors.

The principal areas of experience include housing and residential, commercial and retail development, industrial, leisure, education, healthcare, sports, stadia, site reclamation and remediation.

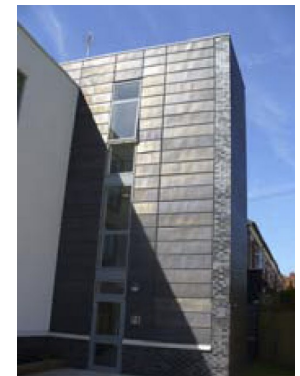
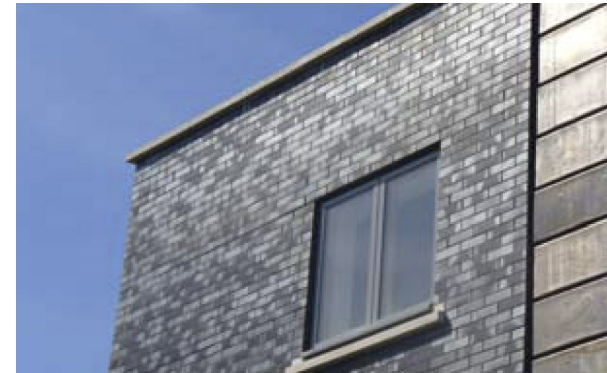
The practice has specialist expertise in design of sports stadia and lightweight structures. Work in this field has resulted in our inclusion on the Institution of Structural Engineers approved list of Consultants for dynamic analysis and assessment of sports structures and grandstands. We are also retained by Aintree Racecourse to advise and monitor the design and installation of the temporary structures constructed each year for the Grand National event.

Our expertise in lightweight structures together with a reputation for creative and innovative design assisted in establishing a

long term relationship with a Canadian manufacturer, Norseman Structures, for the design and development of lightweight, long span, tensioned fabric structures in the UK and Europe. These structures have been developed to provide indoor training facilities for a number of Premiership clubs including Arsenal, Manchester City and Southampton. They have also been used as a cost effective solution for equestrian facilities.

In 2010 our innovative and collaborative working approach was recognised in an award from the BAE Systems Chairman for the re-engineering of specialist foundations.

Our flexibility and commitment to client service has allowed us to develop links with a number of international clients and professionals. Overseas projects have included warehousing and a production facility for British American Tobacco and a 75m clear span manufacturing facility in Bahrain.



Barlow Moor Road Residential Development



civil structural environmental
structural environmental civil
environmental civil structural

Quality Management

It is the objective of TRP Consulting to achieve sustained, profitable growth by providing engineering consultancy services, which meet the needs and expectations of its clients.

TRP Consulting operates effective quality and environmental management systems to ensure that engineering consultancy services meet with relevant standards and the specific requirements of the client. The Quality Management System is ISO 9001:2015 approved. The Environmental Management System is ISO 14001:2015 approved. Both systems are accredited by QMS International plc.

The Practice has developed management systems to cover all aspects of the business operations from administration to project delivery. Procedures are in place for the

review and validation of designs on each project to ensure that key requirements of the brief have been incorporated and that designs are appropriate, economic and technically correct.

Similar procedures are also applied to report and advisory services and to the construction phase of projects to record areas of non-compliance and to monitor progress of remedial works.

The Directors are responsible for ensuring that their staff are aware of and understand this policy and that staff are provided with the resources and directives to undertake individual responsibility for achieving quality in each of their activities.

The Directors maintain and monitor the effectiveness of the system and require the co-operation of all members of staff.



PZ Cussons Perfumery
Townsend Lane Neighbourhood Health Centre



civil structural environmental
structural environmental civil
environmental civil structural

Health and Safety

The Directors believe that it is possible to promote the development of a positive safety culture in the workplace through effective safety management. A safety culture is one in which safety is regarded by everyone as being an issue which concerns everyone.

To assist in developing a positive attitude to health and safety, TRP Consulting employ independent Health and Safety Consultants, Citation PLC, who carry out regular inspections and audits of the premises, working environment and procedures.

TRP Consulting's health and safety objective is to minimise instances of occupational accidents or illnesses and provide a pleasant working environment for its entire staff.

TRP Consulting accepts its responsibility for the health and safety of its employees, but recognises that health and safety at work is also the responsibility of each and every individual associated with the company.

An effective health and safety programme requires continuous communication between workers at all levels. Employees will be consulted on a regular basis and encouraged to contribute to the review and revision of the Policy.

TRP Consulting holds a SSIP (Safety Scheme in Procurement) accreditation confirming its awareness and capability to perform its duties under The Construction (Design & Management) Regulations 2015 (CDM). The Practice will ensure that adequate time and resources are committed to project works to see that:

- Clients are informed and are aware of their duties
- Due regard is given to health and safety in all aspects of our design work
- Adequate information about the health and safety risk of the design is provided to those who need it.
- The project team co-operate with the Planning Supervisor and, where appropriate, other designers involved in the project.



Manchester United Redevelopment
Temporary Roof
Loushers Lane Care Village



civil structural environmental
structural environmental civil
environmental civil structural

Equal Opportunities

TRP Consulting is committed to equality of opportunity for all its employees regardless of factors such as race, colour, religion, nationality, ethnic origin, marital status, class, gender, sexual orientation, age, physical, mental, sensory or learning disabilities.

The concept of equal opportunity is fundamental to good practice in our business in which fairness of opportunity for all is a basic right. Equal Opportunity requires an ethos and structure, which enables and actively encourages individual members of the practice to realise their full potential throughout the complete range of professional services provided. This also involves the recognition and acceptance of individual capabilities and strengths

In order to promote equality of opportunity, the elimination of unfair discrimination, and participation of all employees of the practice we will

- Ensure that all employees, external agencies and individuals dealt with are made aware of the practice's Equal Opportunities Policy.

- Ensure that all publicity and information concerning the practice demonstrates its commitment to Equal Opportunities.
- Provide educational opportunities to meet the professional development needs of all employees and make any arrangements necessary for those opportunities to be taken up.
- Keep all aspects of the practice management and procedures under constant review to promote understanding of Equal Opportunities.
- Ensure that its personnel and employment procedures for all employees are in accordance with its Equal Opportunities Policy and its implications.
- Ensure that the appropriate in-service training is available for all employees concerning the Equal Opportunities Policy and its implications.

This policy statement is regularly reviewed by the directors and staff and amended to respond to changing needs and circumstances.



BAE Welfare Centre
Doncaster Racecourse Redevelopment



civil structural environmental
structural environmental civil
environmental civil structural

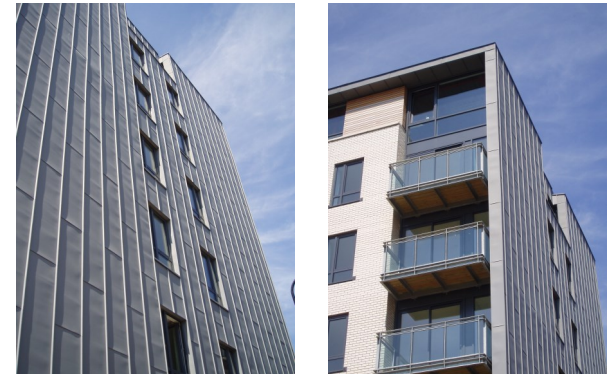
Contact Details

Manchester

Basil Chambers
65 High Street
Manchester
M4 1FS

t 0161 839 9113
e admin@trpconsult.com
w www.trpconsult.com

Tim Royle Bsc (Hons) C Eng MIStructE
Geoff Wilks Bsc (Hons) C Eng MIStructE



Duke Street Residential Development Manchester



civil structural environmental
structural environmental civil
environmental civil structural